

Dee Bi Sink & RH Slophopper, No Taphole

ILLUSTRATED

S6551	(DU HS) Dee right hand slop hopper with sink, back inlet
S4663	Flushpipe 850 x 35mm diameter for slop hopper
B1684	Nimbus 21 1/2" x 100mm bib tap extensions (pair)
S3626	Conceala 2 high level 6 litre cistern, single flush syphon, side supply, internal overflow, lever with chain
S3584	P trap outlet, plastic for slop hoppers
S8925	(TRR2/P) Trap 1 1/2" plastic resealing bottle with 75mm seal, multi-purpose outlet
S8760	Waste 1 1/2" unslotted strainer waste, 50mm long, 75mm dia. brass
S8270	(TB H1) Markwik 1/2" bib taps
B1686	Nimbus 21 concealed bib tap wall mount with self centralising installation (pair)

OPTIONS

S4385	High Level Lever Assembly For Conceala 1 Cistern
S9281	Leg 900mm stainless steel to floor (2 required)
S3632	Conceala 1 cistern 9 litre single flush syphon, alternative height plastic flushbends side supply and internal overflow, no lever

ILLUSTRATED PRODUCT DETAILS



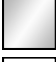



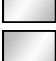
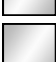

Weights

S6551	18.80 KG
S4663	2.00 KG
S3626	3.00 KG
S3584	0.26 KG
S8925	0.33 KG
S8760	0.23 KG
S8270	1.65 KG

Materials

S6551	Stainless Steel
S4663	Plastic
B1684	Chrome Plated Brass
S3626	Plastic
S3584	Plastic
S8925	Plastic
S8760	Chrome Plated Metal
S8270	Chrome Plated Brass
B1686	Chrome Plated Brass

Finishes

S6551	 Stainless Steel finish (MY)
S4663	 Neutral / No Finish (67)
B1684	 Chrome (AA)
S3626	 Neutral / No Finish (67)
S3584	 White (01)
S8925	 Neutral / No Finish (67)
S8760	 Chrome (AA)
S8270	 Chrome (AA)
B1686	 Chrome (AA)

Capacity

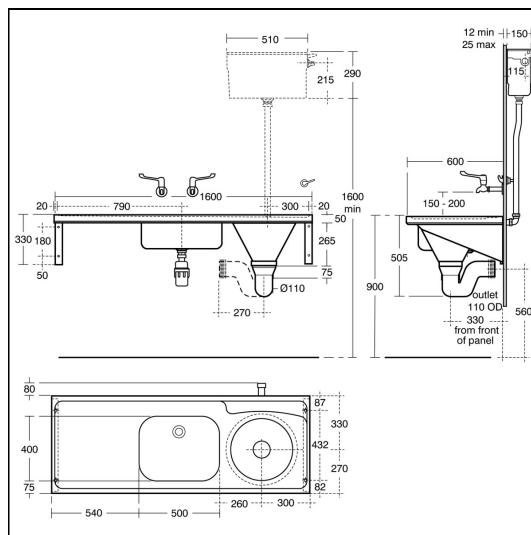
S3626	6.0 litres
--------------	------------

Standards

1.2mm Stainless steel sheet conforms to BS EN 10088:Part 2:2005. Other items to relevant standards

Special Notes

Note HTM64 does not cover for the provision of leg supports to floor.



FEATURES

